

LIGHTING EQUIPMENT

Lighting control protocol – dmx, ArtNET

Lighting controls:

- ETC Nomad (512 chan)
- ADB Mentor 120 lighting control desk

- ADL Electronics dimmers (120 channels of 3 kW each)
- Stage spots 500W Fresnel (*located as showed at stage plan – see appendix*) – 60 units
- PAR64 (*located as showed at stage plan – see appendix*) 15 units mounted + 12 extra units
- profile spots:
 - Selecon SPX 25° - 50° - 4 units
 - Selecon Pacific 23° - 50° - 2 units
- AHR 1000 flood lights - 5 units

- Involight AD8 dimmer (4 x 1kW) - 4 units
- PAR Involight SlimPar 1266 (LED) - 12 units
- RGBW LED bar (120° 70W) - 4 units

- dimming sockets at stage's floor (*located as showed at stage plan – see appendix*)

Additional stuff:

- Robe FAZE 1000 FT hazer
- Global Effects Power-550 (confetti cannon machine)
- Light stand - 8 units
- Floor stand - 10 units

SOUND EQUIPMENT

- Soundcraft Si Expression 3 (32 channels) digital mixing console
- Soundcraft Si Expression 1 (16 channels) digital mixing console
- Behringer X-Touch MIDI controller
- KORG Nanocontrol2 MIDI controller

- Yorkville YX215 (600W) front stage speakers (L+R)
- Yorkville PR315 (250W) rear stage speakers (L+R)
- Yamaha MSR400 stage monitor - 2 units
- Roland KC-150 combo monitor

- dynamic microphones: SHURE 58 - 8 units
- vocal radiosystems: AKG WM S40 Pro - 2 units
- Sennheiser EW 135 G2 - 2 units

- headset microphones: AKG PT40 - 2 units
- earset headworn microphones: SHURE MX153T/O-TQG - 5 units

- clip-on microphones: AKG CK55 - 1 unit
- Sennheiser FP 12 - 1 unit
- hanging microphones: AKG CHM21 - 3 units
- Shure MX202B/S - 2 units
- shotgun microphones: AKG C568B - 5 units

Additional audio stuff:

- Radial ProD2 direct box – 2 units
- ALESIS Midiverb III digital effects processor
- DBX 1046 Quad 4-channels compressor / limiter
- TASCAM MD350 minidisc player
- Sony CD player

VIDEO EQUIPMENT

- Optoma WU515 (6000 ANSI, WUXGA 1920x1200, 10000:1, F=17.63~31.36 mm; manual focus) – 2 units
- Optoma EH200ST (1080p 1920x1080, 3000 ANSI, 20000:1, F/2.8; f=7.42mm, Fixed Zoom) - 5 units
- BARCO G60-W10 (10,000 lumens, WUXGA, DLP laser phosphor projector) - 1 unit

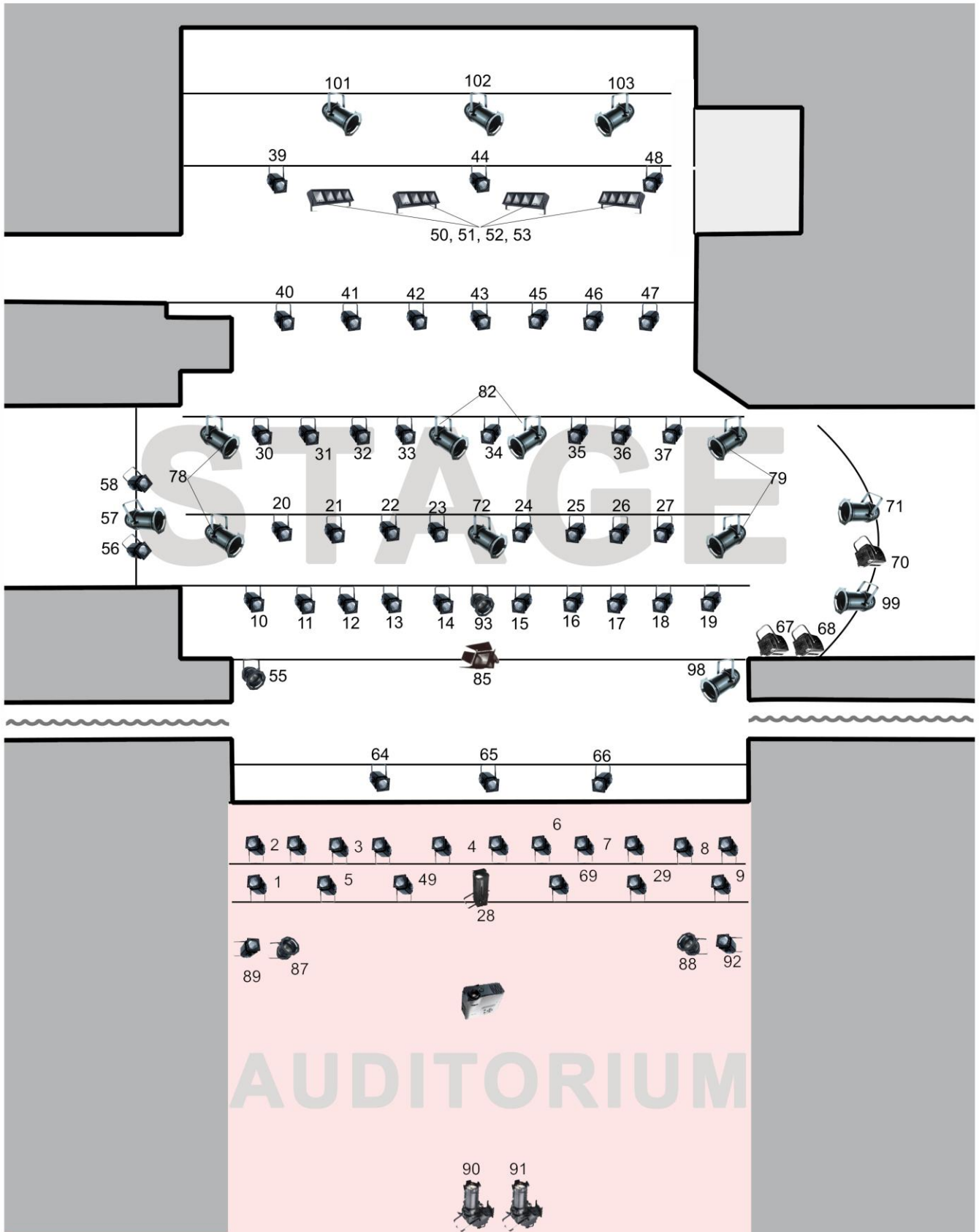
- Sony ILCE 6300 (kit + Sony SEL 55210 lens) – 1 unit
- Logitech BRIO (4K) - 2 units
- Samsung GEAR360 – 1 unit
- VCOM HDMI Cat6 Extender – 2 units
- Blackmagic UltraStudio mini Recorder – 1 unit
- Blackmagic Micro Converter SDI to HDMI - 4 units
- Blackmagic Micro Converter HDMI to SDI - 4 units

ADDITIONAL STUFF

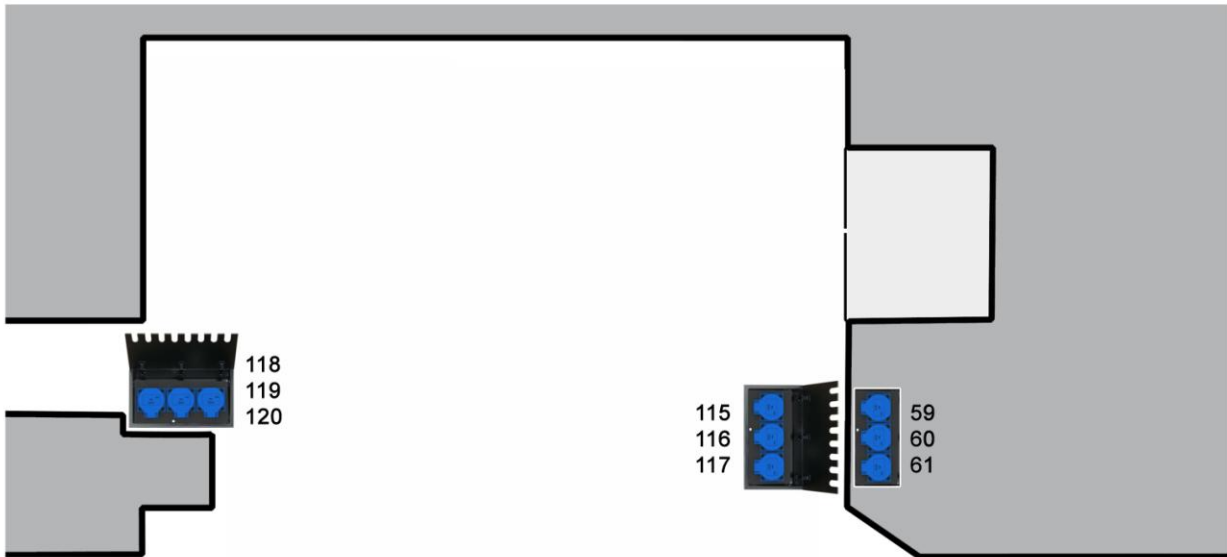
- Datavideo SE-500 video mixer

APPENDIX

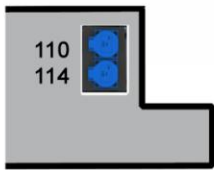
LIGHTING STUFF ON BARS



STAGE FLOOR



STAGE



ADL Electronics dimming rack
(10 units of 220-12-3 ADL Dimmers)



AUDITORIUM

ADB Mentor 120
lighting desk



ETC Nomad 512 channels
dmx512



ArtNET

SOUND STUFF LOCATION

